

### THE ELEGANT, WARM AND CHARMING.

Shubh Aashish, this beautiful, unique, newly constructing 3 bedroom luxury apartment is situated in the heart of central Ahmedabad, with proximity to almost everything. It is the ideal spot for family life amidst the touch of nature.



## shubh aashish

**3 BHK**  
SPIRITUAL PLACE.

FOR BOOKING CONTACT:

**PNREALTORS**  
YOUR TRUST IS OUR ASSET

**+91 9328111196 | +91 9377091426 | (079) 26589090**

[info.pnrealtors@gmail.com](mailto:info.pnrealtors@gmail.com) | [www.pnrealtors.com](http://www.pnrealtors.com)

**OFFICE: D61, SILVER ARC APARTMENTS, B/H TOWN HALL, ASHRAM ROAD AHMEDABAD  
380 006.**

DEVELOP BY :  
 **Shubh Group**

MODERNIZED TO GIVE MAXIMUM COMFORT AND CONVENIENCE.



#### MISSION:

To be a leader and model corporate participant in the development of the construction industry.

To build, maintain and perpetuate a loyal and continuing relationship with every customer through total commitment to quality, transparent dealings, timely completion, thereby enhancing the values for our Customers.

No Negotiation in Price, Quality and Customer's Satisfaction.

#### SHUBH GROUP BELIEVES IN

##### TOTAL CUSTOMER SATISFACTION.

##### TIMELY COMPLETION OF A PROJECT.

Excellent track record of completing projects within agreed time schedule.

##### QUALITY & SAFETY

A well established quality system and a strong belief in a safe working environment at work sites.

##### EXCELLENT PROJECT PLANNING & MONITORING.

Involvement of Top Management/Promoters in the projects undertaken.

##### SOUND EXPERIENCE & STRONG INFRASTRUCTURE.

##### VALUE ADDITION TO THE CONSUMER'S VISION.

Shubh Group has the capability & competence to transform the client's vision into reality. We get fully involved in the client's Endeavour by value addition to the designs, specification & project requirements using our strong project planning & execution skills.





#### PEEPAL TREE

The Brahma Purana and the Padma Purana, related how once, when the demons defeated the gods, Vishnu hid in the peepal. Therefore, spontaneous worship to Vishnu can be offered to a peepal without the presence of his image or temple. The peepal is also closely linked to Krish.



#### KADAMB TREE

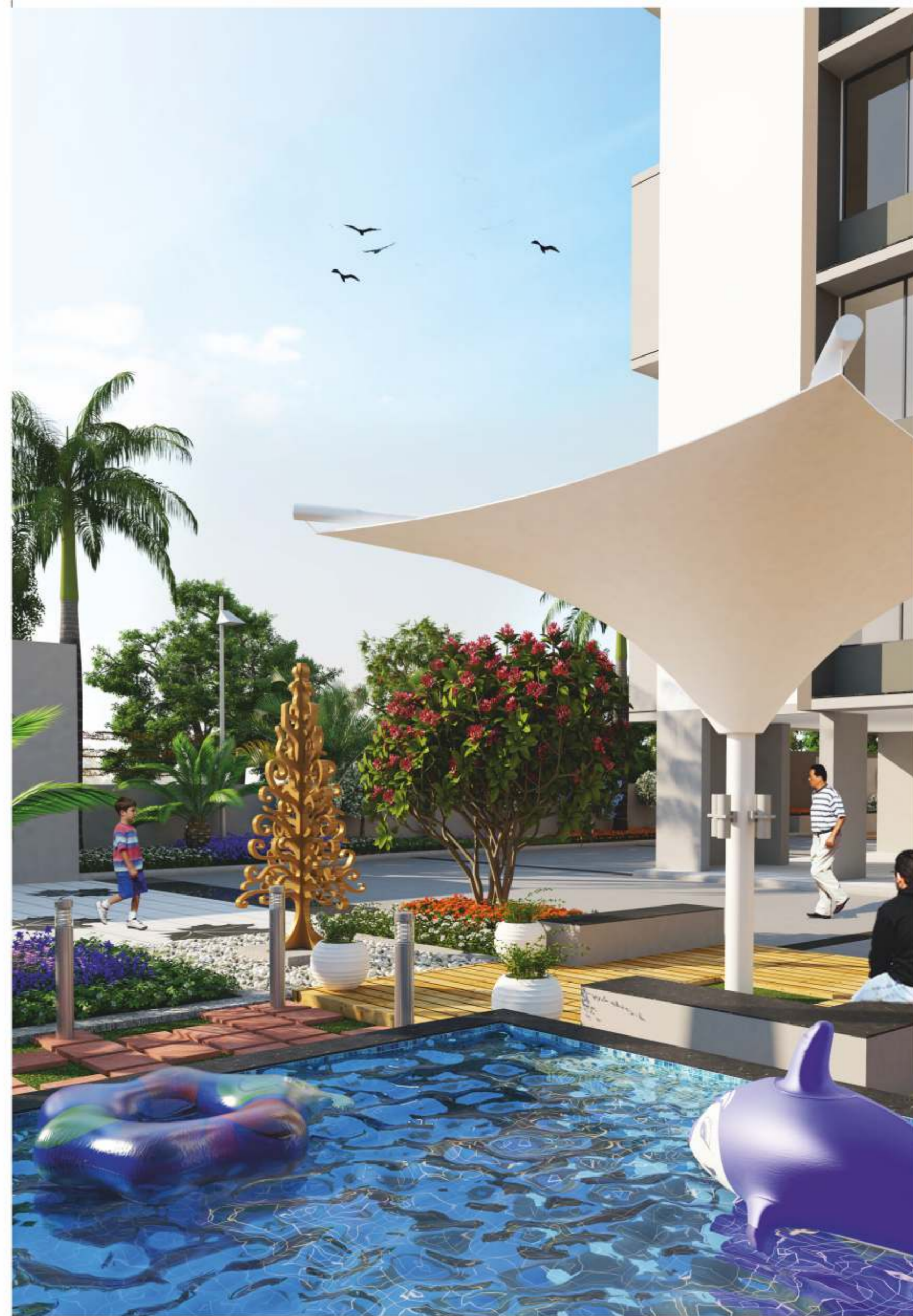
Kadamb trees and flowers are likely to be loved among Gods. Krishna loved to play in Kadamb forests, while Goddess Durga resided in a Kadamb forest. In the southern part of India, the Kadamb tree is associated with Goddess Parvati. The tree is hence, referred to as 'Parvati's tree' there. The worship of the tree is supposed to ensure wealth and progeny. The tree is also sacred to the Jains. Bhagwan Vasupujaya, the 12th Jain Tirthankara is associated with the tree. Kadamb tree is a mythical tree believed to be the Tree of Buddhism to reunite separated lovers.



#### AKASH NEEM TREE

This heavenly tree brought to earth by the Lord Krishna. A quarrel ensued over it between Satyabhama and Rukmini, (Krishna's wives). But Krishna planted the tree in Satyabhama's courtyard in such a way that when the tree flowered, the flowers fell in Rukmini's courtyard.

  
**shubh aashish**  
QUALITY ASSURED LIVING...



SHUBH AASHISH  
HAS  
ALL IT TAKES  
TO  
MAKE YOUR  
LIFE  
UNFORGETTABLE.

## our project team :



HRISHIKESH BHATT | developer

Mr. Hrishikesh Bhatt, who envisioned a success story waiting to take shape in the before a decade itself. Since the formation of Shubh Group has grown swiftly to become one of Gujarat's leading property developers, helping shape the skyline across the Residential sector. Mr. Bhatt, with his blend of knowledge and vision fulfill the dreams of people. The high standards and an unyielding pursuit for excellence has led to the creation of an extensive portfolio of world-class residential spaces.



RAJESH PATEL | developer

Mr. Rajesh Patel has nurtured the group into one of the country's most respected residential projects with a globally recognized clientele and numerous national and international awards to its credit. His bottom-up organizational design approach worked wonders for business development, strategic planning, diversification, and project management along with all other key executive functions.



VAISHAKHEE SHUKLA | designer

Shubh Aashish is a step in the arena of real estate in Paldi, Ahmedabad by the SHUBH GROUP. The building is designed with a constant efforts to create a luxurious ambience, wielding a contemporary aesthetic with practised ease. It is designed however with a spectacular views of the city's skyline --- changing ever so often because of new constructions -- - exploited by large windows. The long and narrow dimensions of the units have been balanced by opening up and brightening the internal spaces that offers warm ambience along with a visually pleasing spaces. Facades are treated to render an interesting mass dominated by white and a shades of grey palettes that stands out in it's neighborhood.



LOKENDRA BALASARIA | architect & landscape designer

We would love this project to be a very green, peaceful and spiritual place. A living place that is more than just a living place - in sense, it should give joy, good health through its environment and amenities like splash pool, gym equipments, tot lots, basketball, badminton etc. Looking forward to a beautiful project.



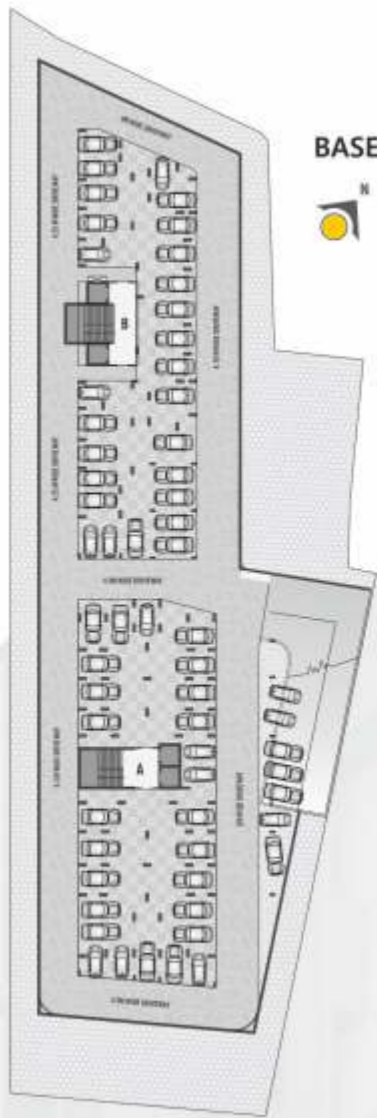
THE SECURE, RELAXED, BEAUTIFUL  
AND  
FRIENDLY ENVIRONMENT.



THE LIFE THAT'S EXACTLY RIGHT FOR YOU.

Resting upon an overlooking and beautiful place, Shubb Aashish is blessed with a spellbinding atmosphere. This splendid, contemporary-styled property presents three bedrooms, a wide choice of indoor and outdoor living and dining areas, broad balconies, making it ideal for your family life.





**BASEMENT PLAN**



**LEGEND**

- 1 Main Entrance
- 2 Security Cabin
- 3 Drop off area with tensile roof
- 4 Splash Pool
- 5 Pergola seating
- 6 Totlot
- 7 Landscape Sitout
- 8 Mini golf
- 9 Badminton Court
- 10 Derasar
- 11 Lawn area
- 12 American Basketball
- 13 Society Office



**GROUND FLOOR PLAN**





ELEGANT TROPICAL  
DESIGN AND AMBIANCE.



tennis court & jain derasar



entry passage

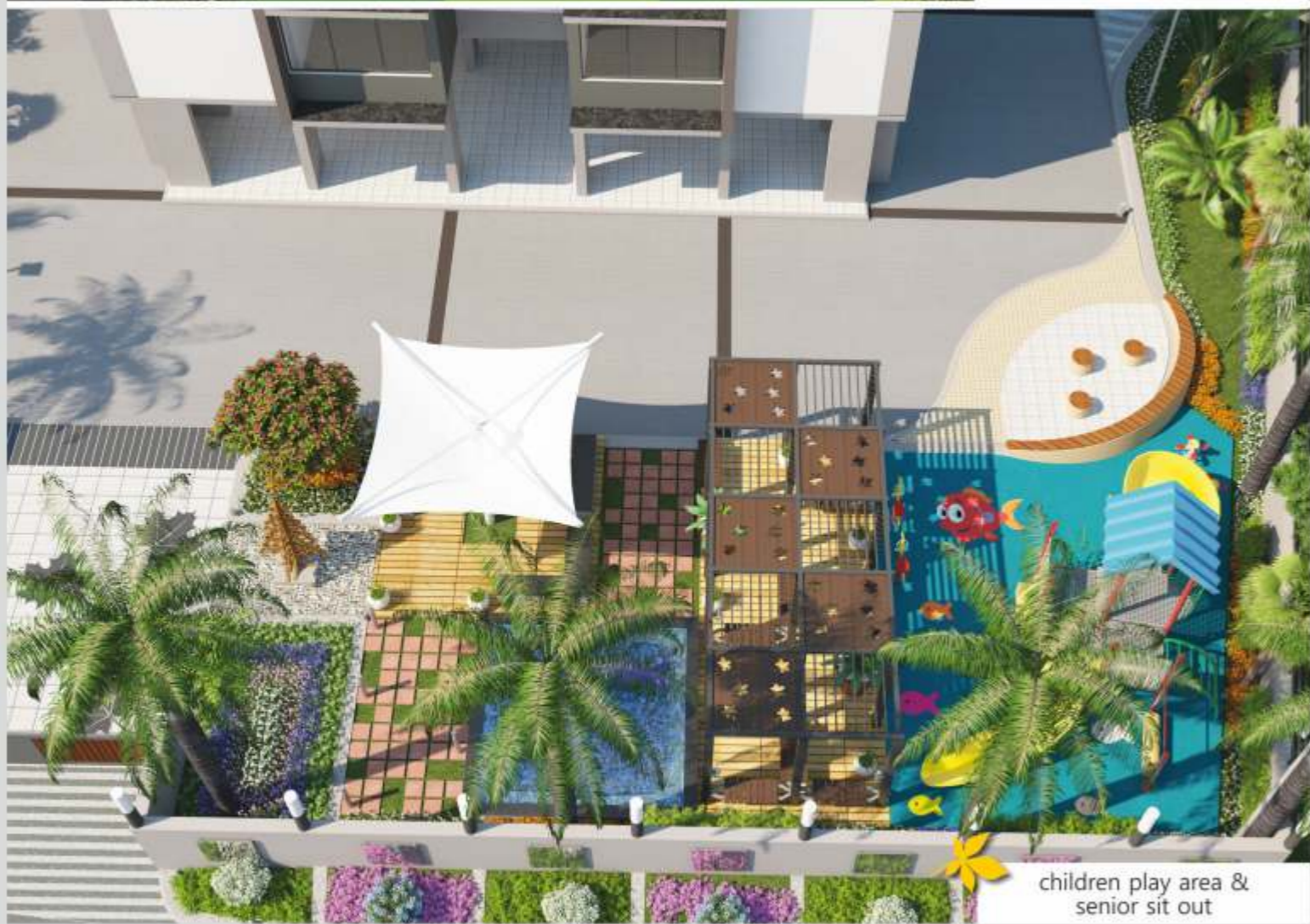
TYPICAL FLOOR PLAN







basket ball & mini golf area



children play area & senior sit out

### LEGEND

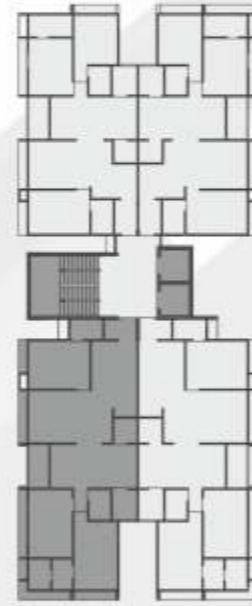
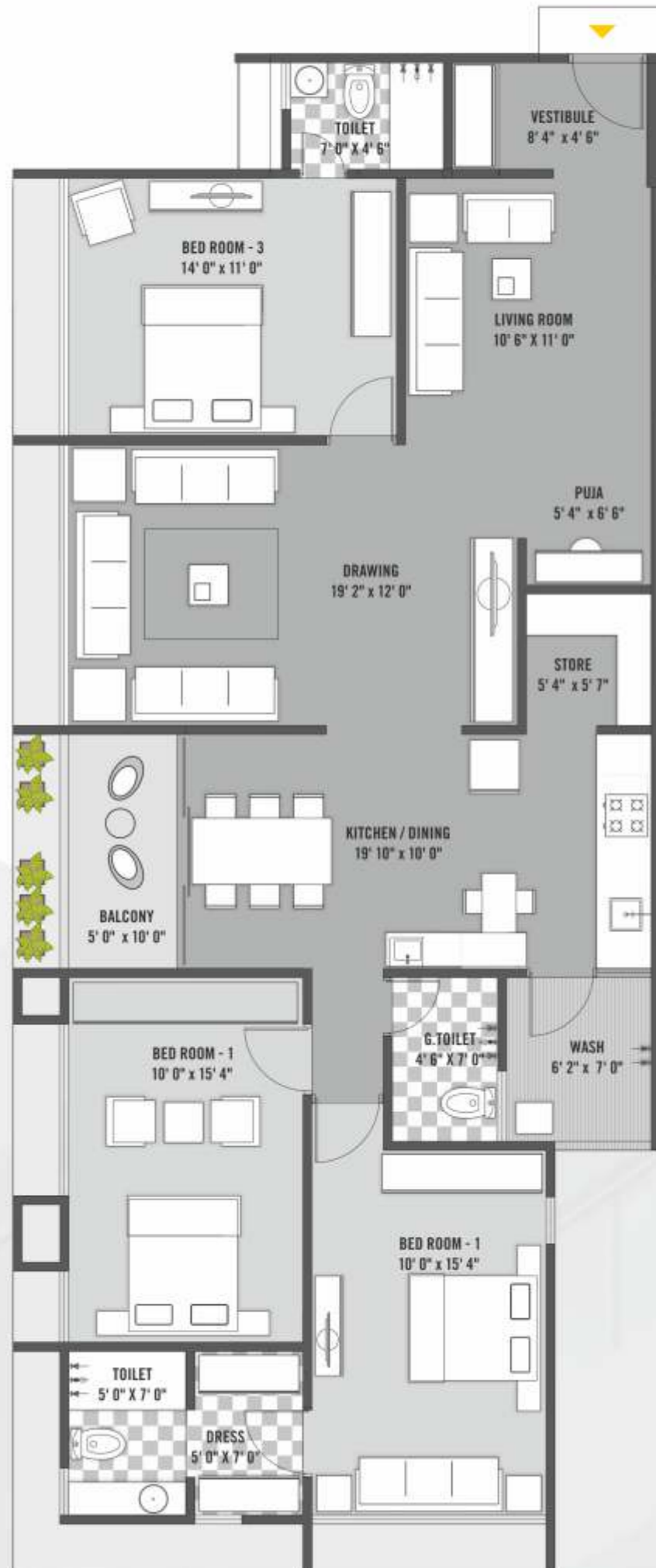
- 1 Green Gym
- 2 Totlot For Tiny Tots
- 3 Telescope
- 4 Seating
- 5 Chess Board Seating
- 6 Artificial Lawn

### TERRACE PLAN





3BHK TYPE - 1  
BLOCK - A UNIT NO - 3 & 4



3BHK TYPE - 2  
BLOCK - A UNIT NO - 1 & 2  
BLOCK - B UNIT NO - 1 & 4





3BHK TYPE - 3  
BLOCK - B UNIT NO - 2 & 3



garden space



- STRUCTURE :**  
RCC Frame Structure With Seismic Zone!!! Compliance.
- FLOORING :**  
A Unique Designed Premium Quality Vitrified Tiles.  
drawing & living room 36 x 36  
all other rooms 24 x 24
- KITCHEN/STORE :**  
Exclusive Granite/composite Marble Platform With Design Tiles  
Dedo-up To Lintel Level  
Mini Modular Kitchen  
Washing Machine Inlet /outlet In Wash Area.  
Provision For Gas Pipeline
- TOILET / PLUMBING**  
Western concept designed toilet.  
concealed plumbing with premium quality cp fitting jaquar. / Ess equivalent cera / equivalent brand sanitary ware
- DOOR :**  
Decorative Main Door With Both Side Veneer. & internal all door Flush Door With Wooden Frame.
- WINDOWS :**  
Fully Glazed Anodized Aluminum Windows With Stone Jamb.

- ELECTRIFICATION :**  
Concealed Copper Wiring With Adequate Number Of Points In All Rooms  
Concealed Electrification With Premium Quality Copper Wire / Cable  
Premium Branded Modular Switches And Accessories.  
Distribution Board With MCB & ELCB  
Provision For Split A/C point in all bedroom.  
Three Phase Electrical Line.
- WALL/PAINT :**  
internal finish single coat mala plaster with wall putty & external sand faced plaster with premium quality acrylic paint.
- ELEVATORS :**  
Premium Quality High Speed Elegant With automatic door.
- TERMITE TREATMENT :**  
Anti Termite Treatment Shall Be Applied By Standard Materials To Completed Area.
- TERRACE :**  
Required Water Proofing On Terrace.

**SPECIFICATION :**



RE DEVELOPMENT PROJECT  
NEW AASHISH CO.OP. HOUSING SOCIETY LTD.

Specific Notes :  
1.) Commencement and timely execution of the project is subject to all necessary approvals from relevant govt. authorities, occurrence of natural calamities or any other external factors beyond developer's control. 2.) The dimensions shown in the brochure are approximate. 3.) The developer reserves the right to change, revise or make any modification, addition, omission or alteration in the scheme as a whole or part thereof, at their sole discretion. 4.) The brochure is only for illustration & private circulation purpose & is not a legal document or a binding one. 5.) torrent power, A.M.C, legal charges, and Government levies like stamp Duty, Registration charges, Legal charges, Service Tax, VAT and any other additional charges are to be borne by the member. 6.) Purchaser are strictly not permitted to make any changes, alternation of any nature in the elevation, exterior colour scheme of the building or any changes affecting the overall design, concept and outlook of the entire scheme during or after completion of scheme. 7.) In case of the purchaser cancels the booking, he will get back the paid amount only when the registered unit get resale after deduction of 10% of the total unit value. 8.) Subject to Ahmedabad Jurisdiction.

LOCATION MAP :

**shubh aashish**

opp.shefali center, paldi cross road,  
paldi, ahmedabad.

FOR BOOKING CONTACT:

**PN REALTORS**  
YOUR TRUST IS OUR ASSET

+91 9328111196 | +91 9377091426 | (079) 26589090  
[info.pnrealtors@gmail.com](mailto:info.pnrealtors@gmail.com) | [www.pnrealtors.com](http://www.pnrealtors.com)

OFFICE: D61, SILVER ARC APARTMENTS, B/H TOWN HALL, ASHRAM ROAD AHMEDABAD 380 006.

DEVELOPER :

**SHUBH RATNA**  
DEVELOPERS PVT.LTD

DESIGNER :

vaishakhee shukla  
vaibhav consultants

LANDSCAPE DESIGNER :

lokendra balasaria  
la spazio | 079 400 26 82

STR. CONSULTANT :

**SETU**  
INFRASTRUCTURE